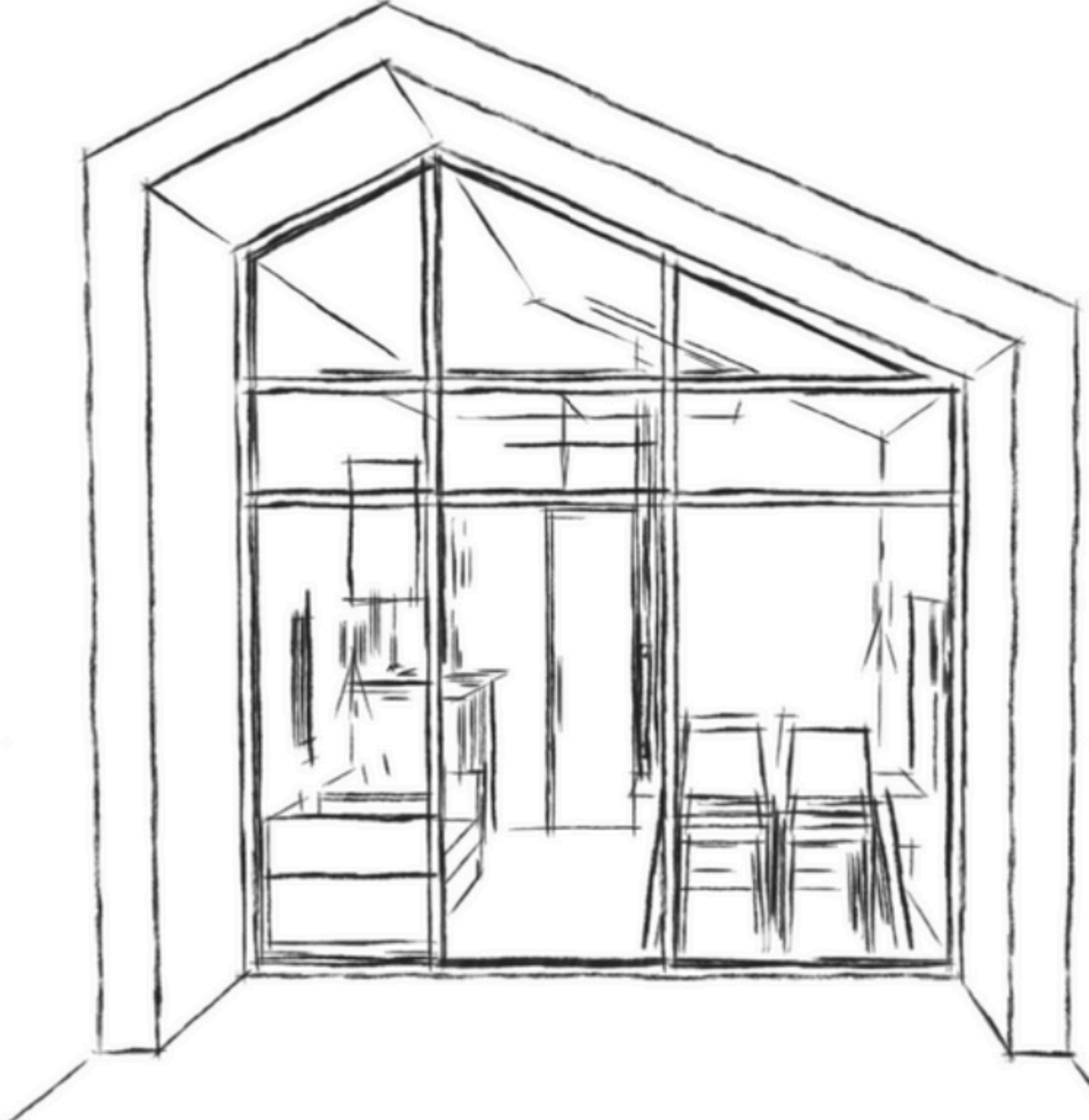




HOME OF TOMORROW

by





INTRODUCING COCO-MAT WOODEN HOUSES

Welcome to the future of sustainable living. COCO-MAT Wooden Houses combine innovative design, eco-friendly materials, and unparalleled comfort. Our 45-square-meter homes are crafted from solid wood and equipped with luxurious COCO-MAT products, offering a harmonious blend of nature and modernity. Experience ultimate durability and timeless elegance with COCO-MAT.

* 50 years of warranties by **COCO-MAT**

- **Beds:**
 - 2 Epicurus beds (200X160)
- **Bedding:**
 - COCO-MAT pillows
 - COCO-MAT sheets
 - COCO-MAT duvets
 - COCO-MAT towels
- **Bathroom:**
 - Traditional stone bathroom & Zealots hygiene products
- **Furniture:**
 - COCO-MAT wardrobe (2.80m by 2m)
 - Dining table with large, right-angle chairs for 4 people, complete with COCO-MAT cushions
- **Living Room:**
 - Traditional wooden COCO-MAT design
 - Three partitions separating different living areas

INTERIOR FEATURES





NATURAL RAW MATERIAL

Our wooden house is made from ipe, pine, and mahogany, materials renowned for their strength and durability. Ipe, pine, and mahogany are excellent choices for wooden house construction due to their numerous qualities. They are weather-resistant, have natural insulating properties, and offer excellent structural stability. Additionally, they are renewable woods, making them eco-friendly options for those looking to minimize their environmental impact.

Furthermore, everything up to the windows is made by COCO-MAT with the same quality and high standards. Every element of our house reflects COCO-MAT's commitment to excellence and attention to detail. We use top-quality materials and advanced manufacturing techniques to ensure that each house provides optimal comfort and exceptional durability.

It is a high-end product that remains accessible to everyone. Our goal is to make the luxury and comfort of a well-built house available to as many people as possible, without compromising on quality.



Stores

Hotels

YOUR HOME COMES WITH EPICURUS

Factors such as body weight, sleeping position (whether on the belly, side, or back) and personal sleep preferences can influence the support your body needs.

Additionally, sleep preferences can change over time due to pregnancy, weight fluctuations, a new partner, or evolving sleep habits.

Most likely your partner has different sleep preferences, which makes unique personalized sleep solutions even more important.

Epicurus mattress includes three cassettes of different elasticity that can be rearranged in order to fit perfectly to your body type and sleep preferences.

The firm layer of coconut fibers at the bottom gives the necessary support, while the more elastic top layer on top of the 3 cassettes gently embraces your body.

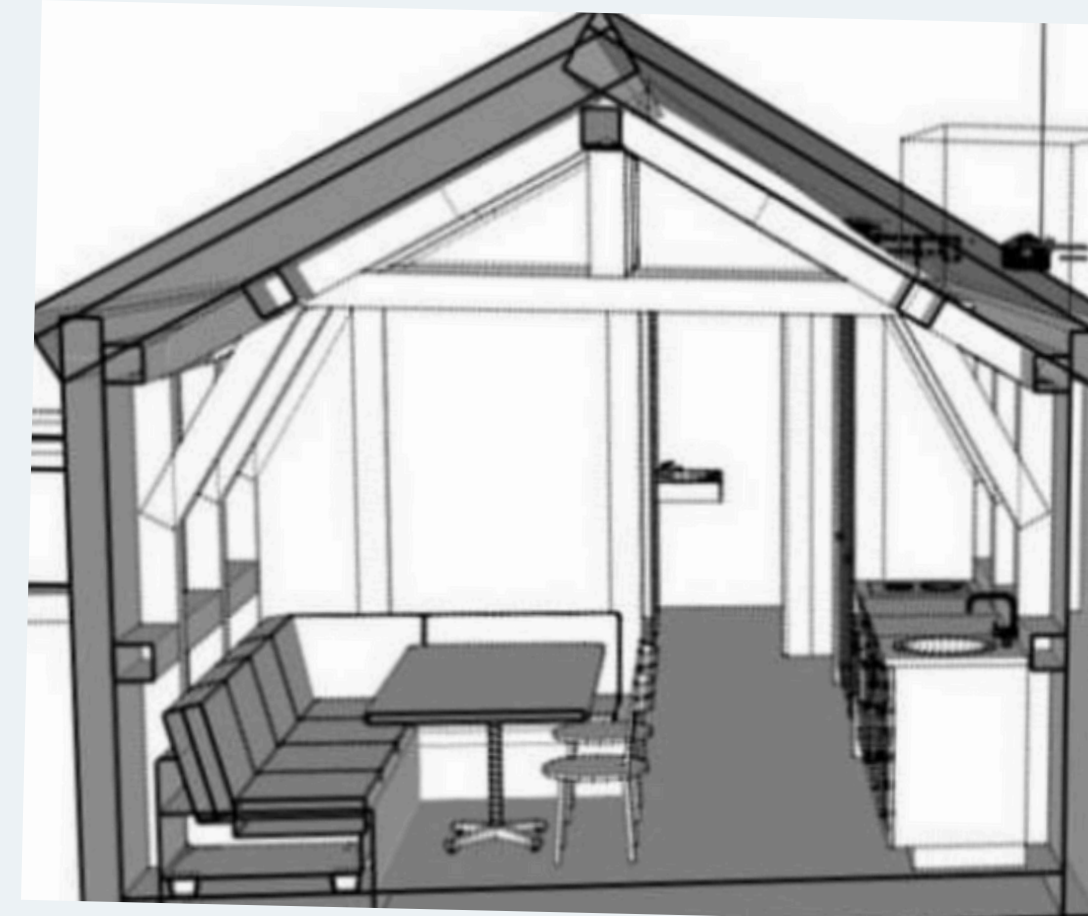
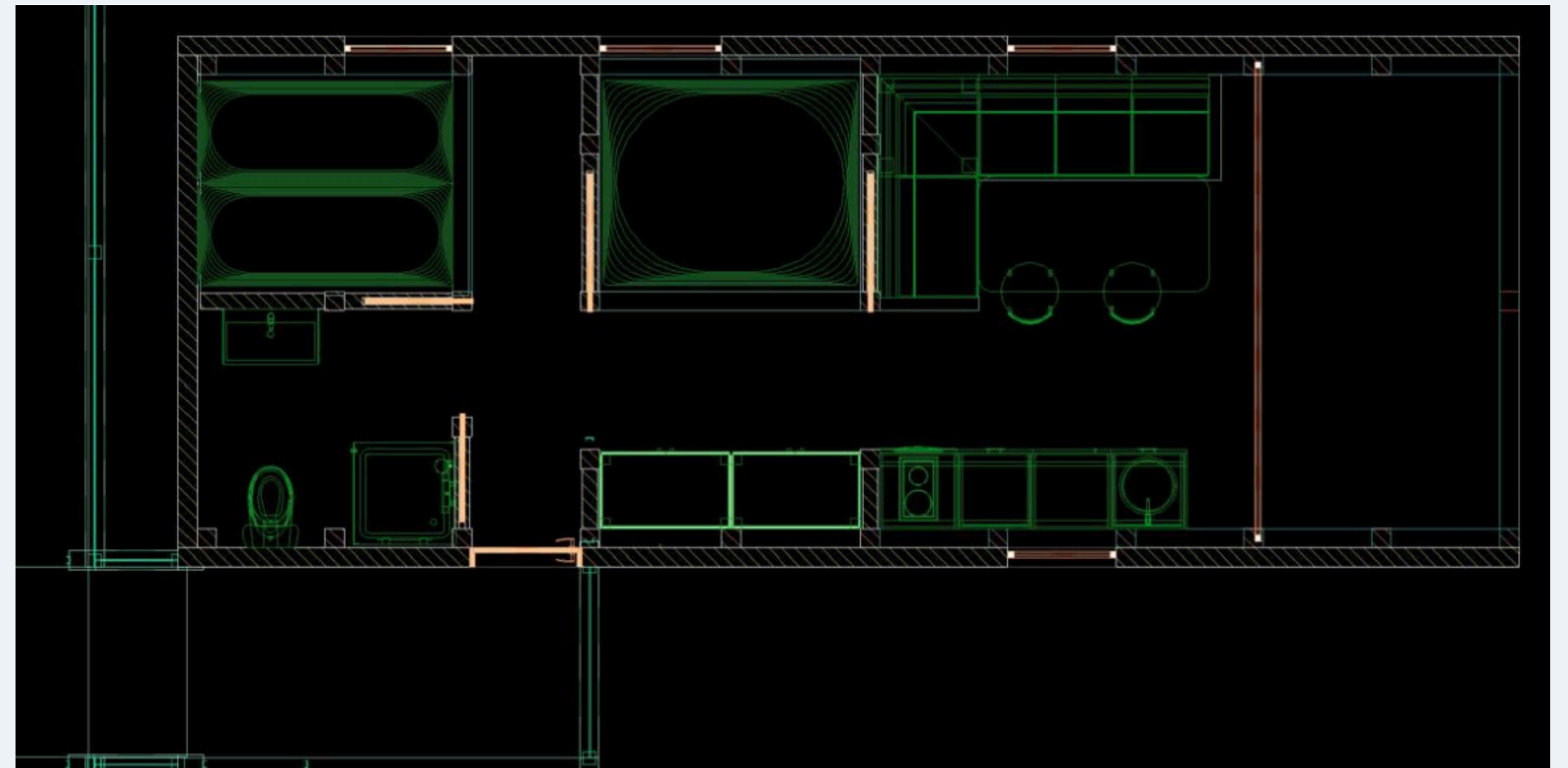


Height: ± 27cm.
 Natural Materials: natural latex, rubberized coconut fiber, horse hair, cactus fibers, seaweed
Outside cover: 100% knitted cotton
Dimensions: Custom dimensions
Inside case: The mattress is placed inside a 100% cotton washable case with a perimetric zipper.
Advantage: A double mattress features three cassettes on both the left and the right side, allowing each partner to rearrange them and achieve their ideal level of support. Every double mattress, from 1.40 m and above, is cleverly composed of 2 single mattresses seamlessly united within an inner cotton case. This construction not only accommodates two people comfortably, enabling independent movement without disrupting each other's sleep but also simplifies maintenance and transport.

PLAN OF THE HOUSE

Our house is an ergonomic 45-square-meter home divided into four separate rooms. It consists of a dining-kitchen area, a master bedroom separated by a sliding door from the second bedroom, both equipped with double beds, and a bathroom.

This layout allows for privacy and personal space in each part of the house while optimizing the use of space. With this clever design, every family member can enjoy their own private area while benefiting from functional and comfortable common spaces.



***The system integrates robust thermal and vapor barrier insulation to ensure optimal comfort and energy efficiency in the wooden house.**







PHOTO GALLERY



EXTERIOR FRONT
VIEW





PHOTO GALLERY

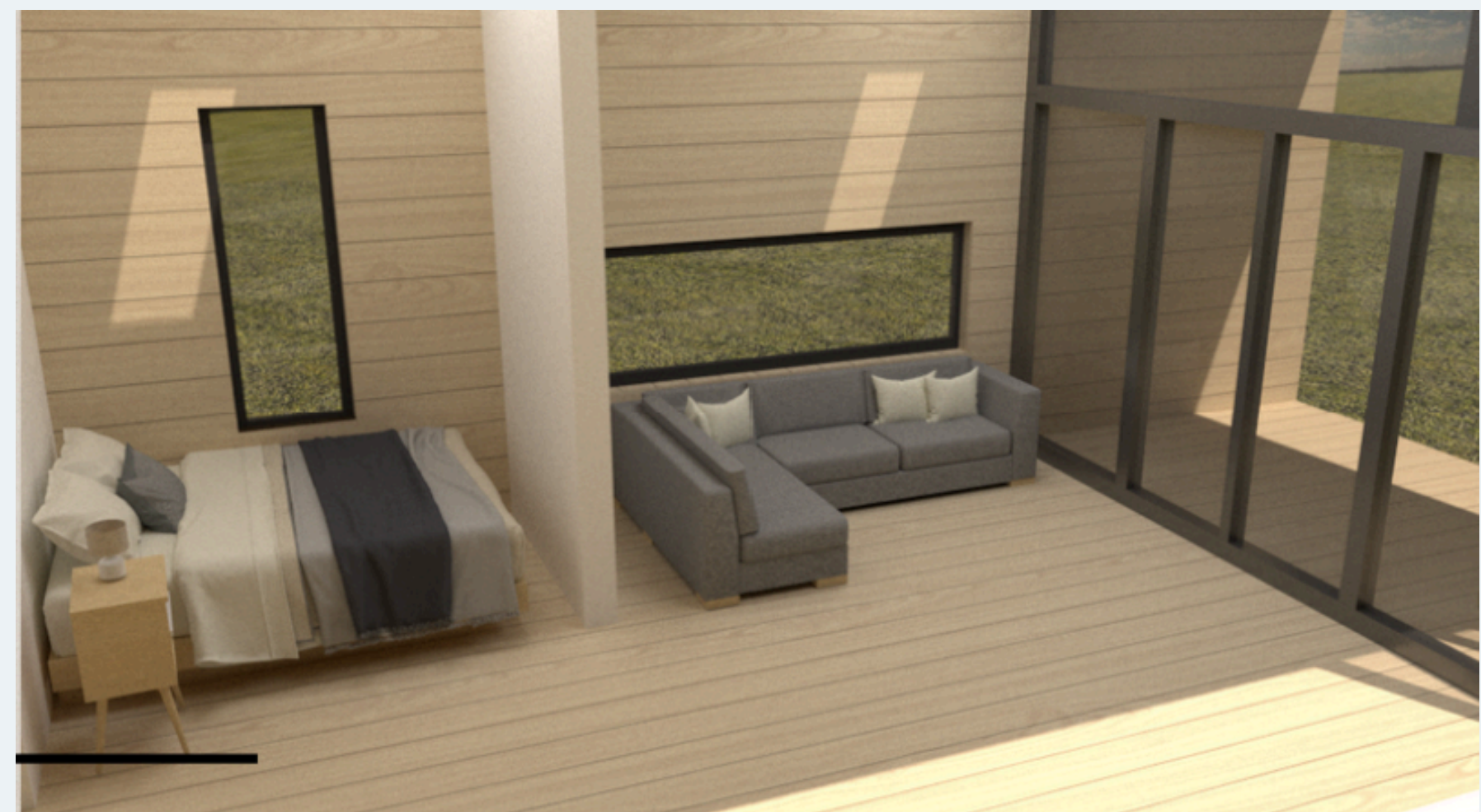
INTERIOR AND SIDE VIEWS

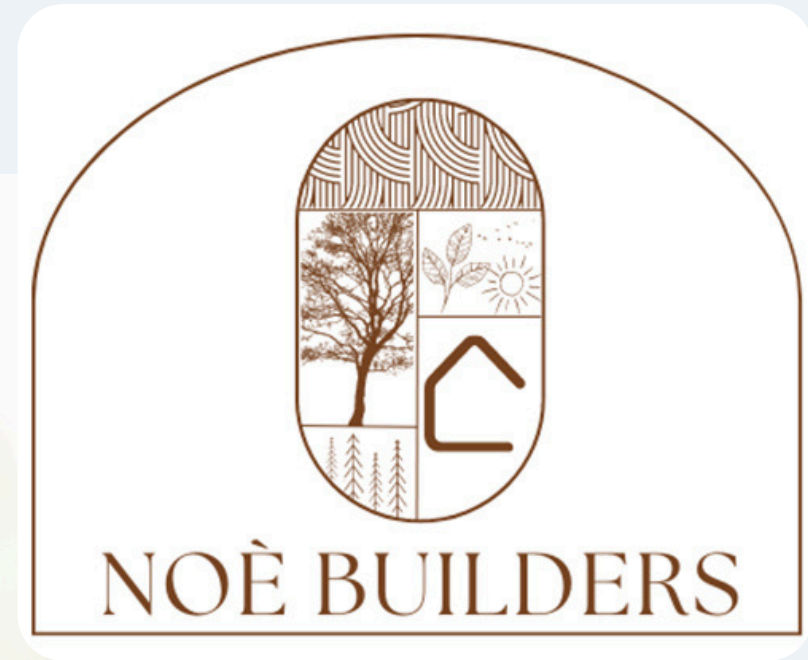




PHOTO GALLERY

PANORAMIC INTERIOR VIEW





THE FUTURE IS NOW

A turnkey service concept—whether you're looking to make it your primary home by the sea or in the mountains, rent it out for economic profitability, or provide high-end hospitality. COCO-MAT's wooden houses are the cornerstone of a new model of living in Europe and around the world.

by

COCO-MAT
sleep on nature

CONTACT US

eva@noèbuilders.com

TRakotondramboa@coco-mat.com

Paul@coco-mat.com

+30 699 906 5330

+33 7 66 25 29 71

Kontogianni 11, Likovrisi 141 23, Greece